

THORPE PARK LEEDS

3125
CENTURY WAY

TO LET
GRADE A OFFICES

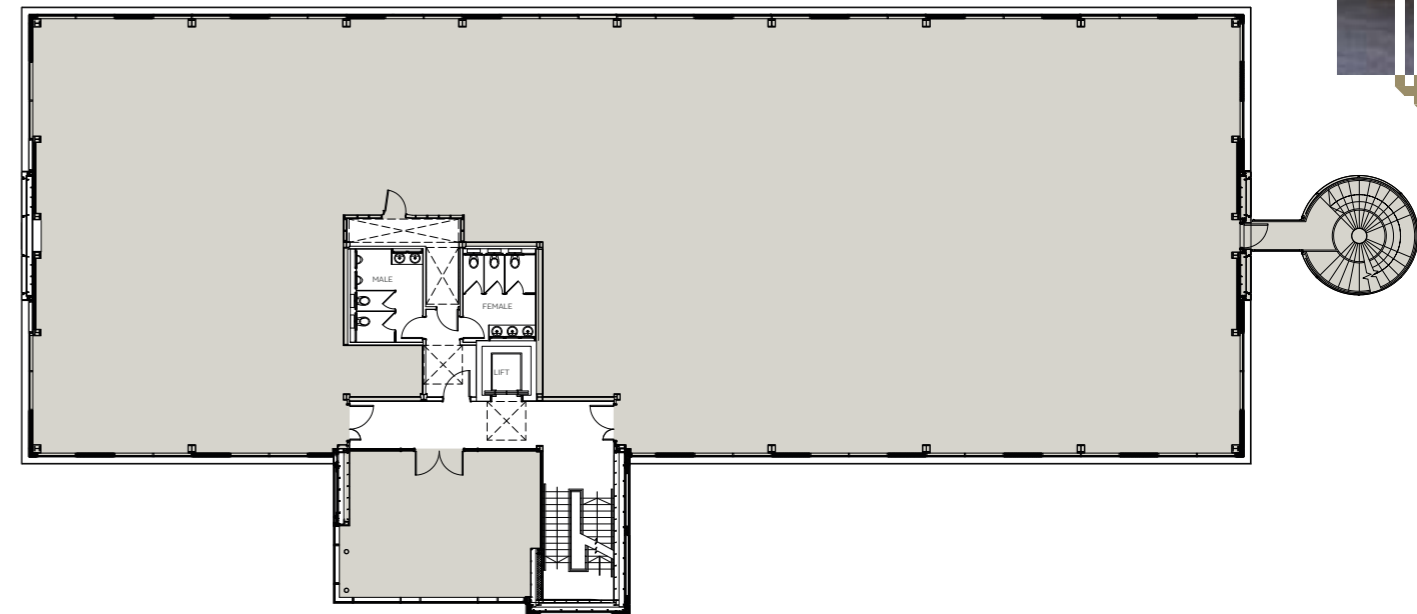


8,175 SQ.FT (759.5 SQ.M) GRADE A OFFICES
WITH 35 CAR PARKING SPACES

WWW.THORPEPARKLEEDS.COM



Sat Nav reference LS15 8ZB



BUILDING SPECIFICATION

Key features are as follows:-

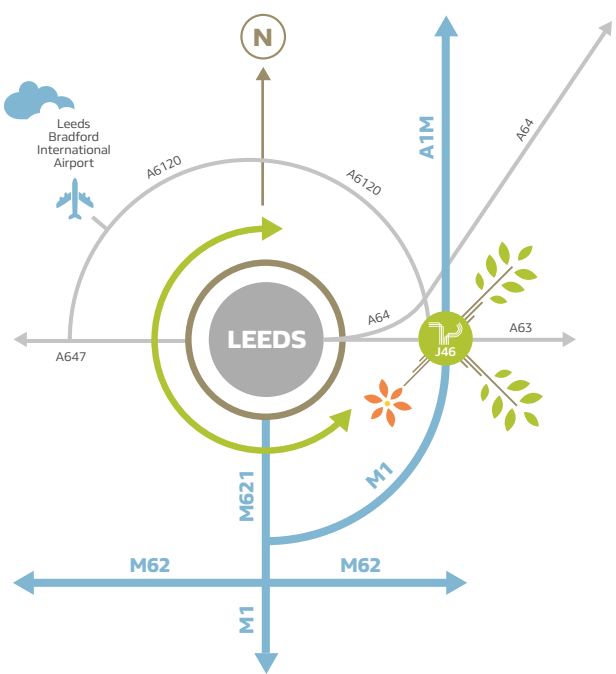
- Full access raised floors
- Suspended ceiling with Category II lighting
- Air conditioning
- Carpet tiled floor covering
- Kitchen
- Feature entrance area
- Male, female & disabled WCs



3125 CENTURY WAY COMPRISES A GRADE A, THREE STOREY, OFFICE BUILDING, WITH GENEROUS CAR PARKING RATIOS.

The second floor office suite offers open plan accommodation, with a modern specification and good natural light.

Floor	SQ.FT	SQ.M
Second Floor	8,175	759.5
Total	8,175	759.5



LOCATION IS EVERYTHING

Thorpe Park Leeds offers a class leading working environment with excellent communications. 3125 Century Way sits in a prime location overlooking junction 46 of the M1.

Crossgates railway station is within 1 mile and planned bus services will run through the heart of Thorpe Park Leeds, connecting to the local area and Leeds city centre.

Thorpe Park Leeds has also been chosen for a new train station, which is anticipated to open in 2021 and will connect to Leeds city centre in 8 minutes.

Rates
Interested parties are advised to contact the Local Rating Authority at Leeds City Council.

Terms
The accommodation is available to let either as a whole by way of a new sub lease on terms to be agreed.

Legal Costs
Each party is to be responsible for their own legal costs incurred in the preparation and completion of the legal documentation.

VAT
VAT will be charged where applicable.

Contacts

For further information, visit the Thorpe Park web site www.thorpeparkleeds.com

JLL
0113 244 6440
jeff.pearey@eu.jll.com
clem.mcdowell@eu.jll.com

Cushman & Wakefield
0113 233 7300
adam.cockroft@cushwake.com
ross.firth@cushwake.com

BNP Paribas Real Estate
0113 242 0044
richard.dunhill@bnpparibas.com
liam.a.ridley@bnpparibas.com



Be part of a successful business community
take a look at thorpeparkleeds.com to find out more.



MISREPRESENTATION ACT: Cushman & Wakefield, BNP, JLL for themselves and for the vendors or lessors of this property, whose agents they are, give notice that: a) all particulars are set out as a general outline only for the guidance of intending purchasers or lessees and do not comprise any part of an offer or contract: b) all descriptions, dimensions, references to condition and necessary permissions for use and occupation and other details are given in good faith and are believed to be correct but any intending purchasers or tenants should not rely on them as statements or representations of fact but must satisfy themselves by inspection or otherwise as to the correctness of each of them. c) no person in the employment of Cushman & Wakefield, BNP, JLL has any authority to make any representation of warranty whatsoever in relation to this property. Design and Production DS.EMOTION NOV 2017_4150.