



AGENCY

OFFICE

21 HANOVER SQUARE CITY OF WESTMINSTER, LONDON W1S 1JW

DESCRIPTION

The available accommodation is situated on the 2nd floor (1,512 sq ft) with prolific views over Hanover Square to the East. The office accommodation as well as the buildings reception and common parts are scheduled to be refurbished. Completion set for Q2 2018.

LOCATION

The red-brick building prominently sits on the south west corner of Hanover Square, fronting on to Brook Street which itself extends through to Grosvenor Square and Hyde Park.

Bond Street (Jubilee & Central Lines), Green Park (Piccadilly, Victoria and Jubilee Lines) and Oxford Circus (Central, Bakerloo & Piccadilly Lines) Underground Stations are all close by whilst the area is served by a range of shops, restaurants, bars and hotels.

ACCOMMODATION

Floors / Units	Size
2nd Floor	1,512 sq ft (140.46 sq m)
Total	1,512 sq ft (140.46 sq m)

ADDITIONAL INFORMATION

Terms: TBC

Rating: £38.42 psf (April 2016/17)

Service Charges: £10.00 psf



TENURE

LEASEHOLD

SIZE

1,512 SQ FT

EPC

KEY FEATURES

- ▶ To be refurbished
- ▶ Perimeter & under floor trunking
- ▶ Passenger lift
- ▶ Demised toilets & shower
- ▶ Comfort cooling

FOR FURTHER INFORMATION

MR ROBERT ROONEY

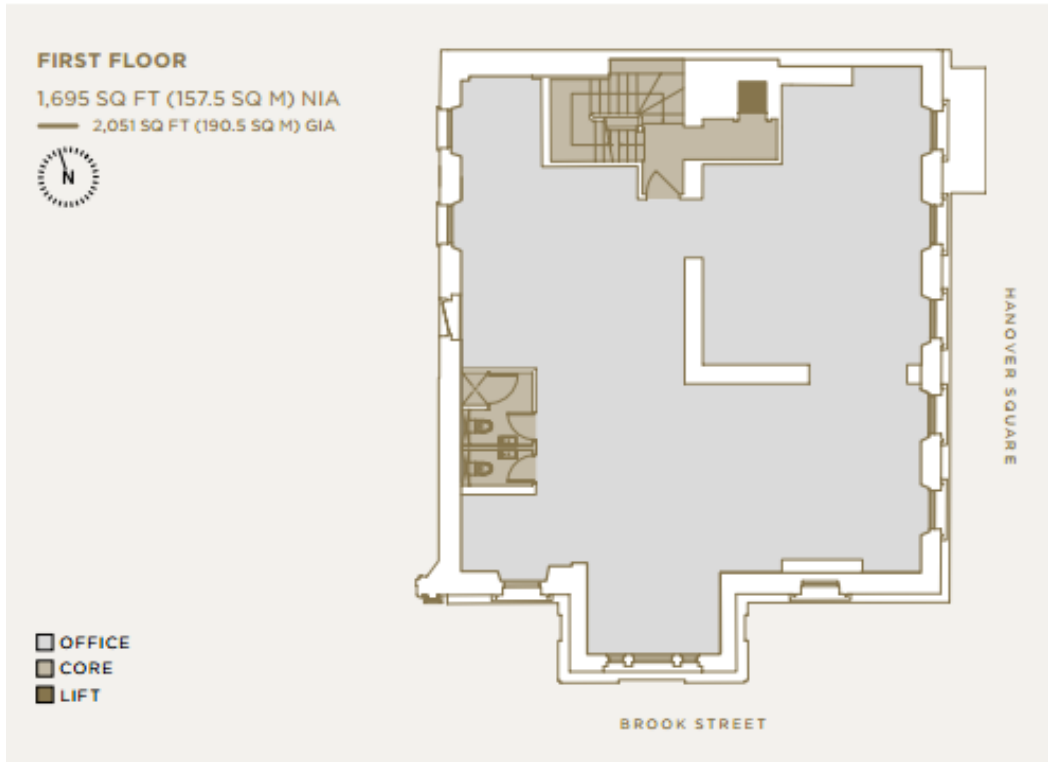
020 7338 4408

robert.rooney@bnpparibas.com

MR SAM NORRIS

020 7338 4262

sam.norris@bnpparibas.com



Misrepresentation Act 1967: BNP Paribas Real Estate Advisory & Property Management UK Limited for themselves and for the vendor(s) or lessor(s) of this property whose agents they are, give notice that: 1. These particulars do not constitute, nor constitute any part of, an offer or contract. 2. None of the statements contained in these particulars as to the property are to be relied on as statements or representations of fact. 3. Any intending purchaser or lessee must satisfy himself by inspection or otherwise as to the correctness of each of the statements contained in these particulars. 4. The vendor(s) or lessor(s) do not make or give and neither BNP Paribas Real Estate Advisory & Property Management UK Limited nor any person in their employment has any authority to make or give, any representation or warranty whatever in relation to this property. Finance Act 2013: Unless otherwise stated all prices and rents are quote exclusive of VAT. The Business Protection from Misleading Marketing Regulations 2008: These details are believed to be correct at the time of compilation but may be subject to subsequent amendment. January 2016.